



OVERPRESSURE LOG



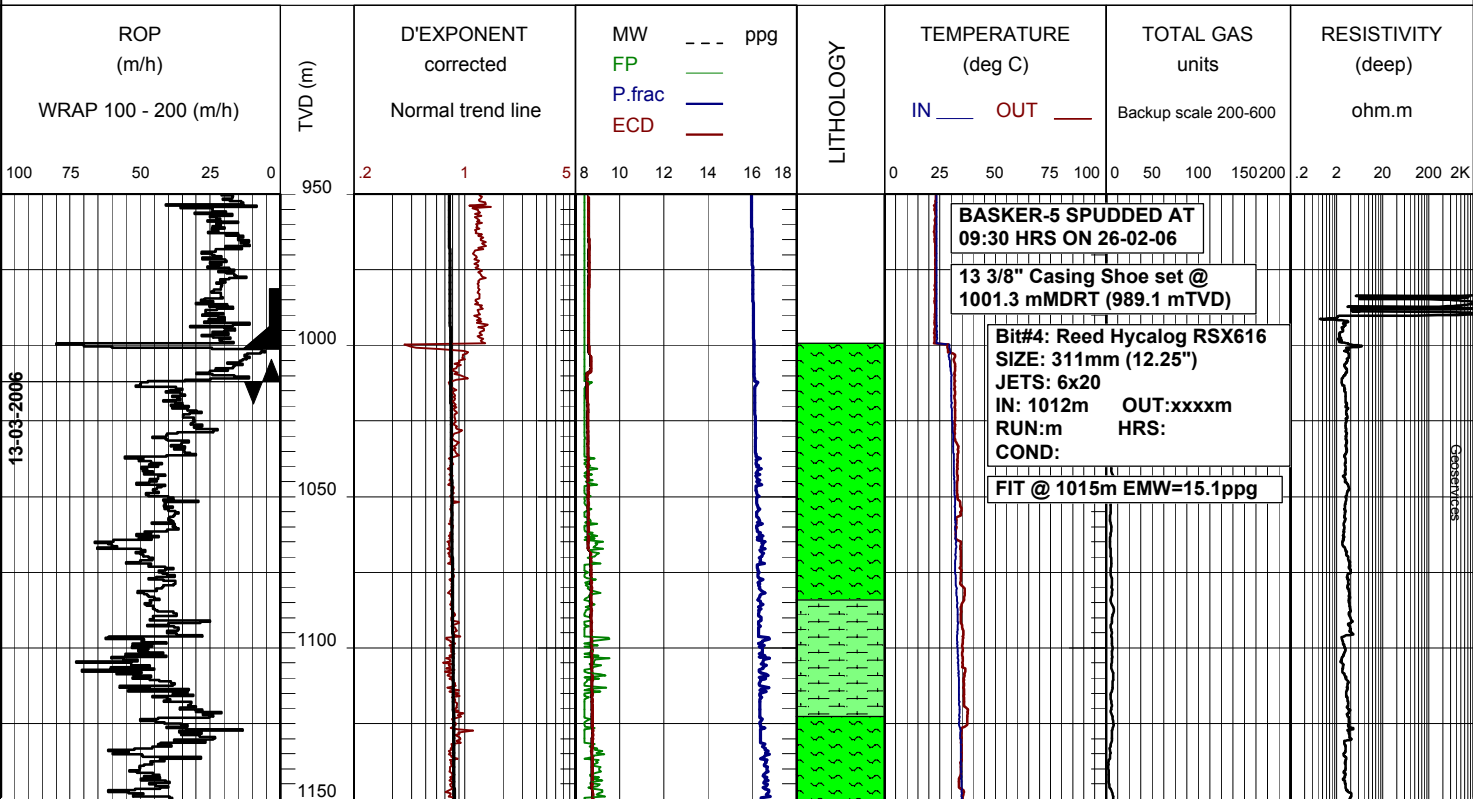
FROM (m): 950 TO (m): 2000 SCALE : 1/ 2500

Well name : BASKER5 Latitude : 38°17'59.31"S Longitude : 148°42'23.80"E Rig Name : OCEAN PATRIOT
 Company Name : ANZON Country : AUSTRALIA Rig Type : SEMI-SUB

RT-LAT (m): 21.5 Final TD- Drillers (m): 3357m Spud Date : 26-02-2006
 Water Depth (m): 153.6 Final TVD SS (m): 3072m TD Date : xx-xx-2006

Computed Method: Eaton Overburden law : Soft
 Trend Slopes : a = 0.0000982 b = -0.1914077
 Hydro. Gradient : 1.04 kg/l

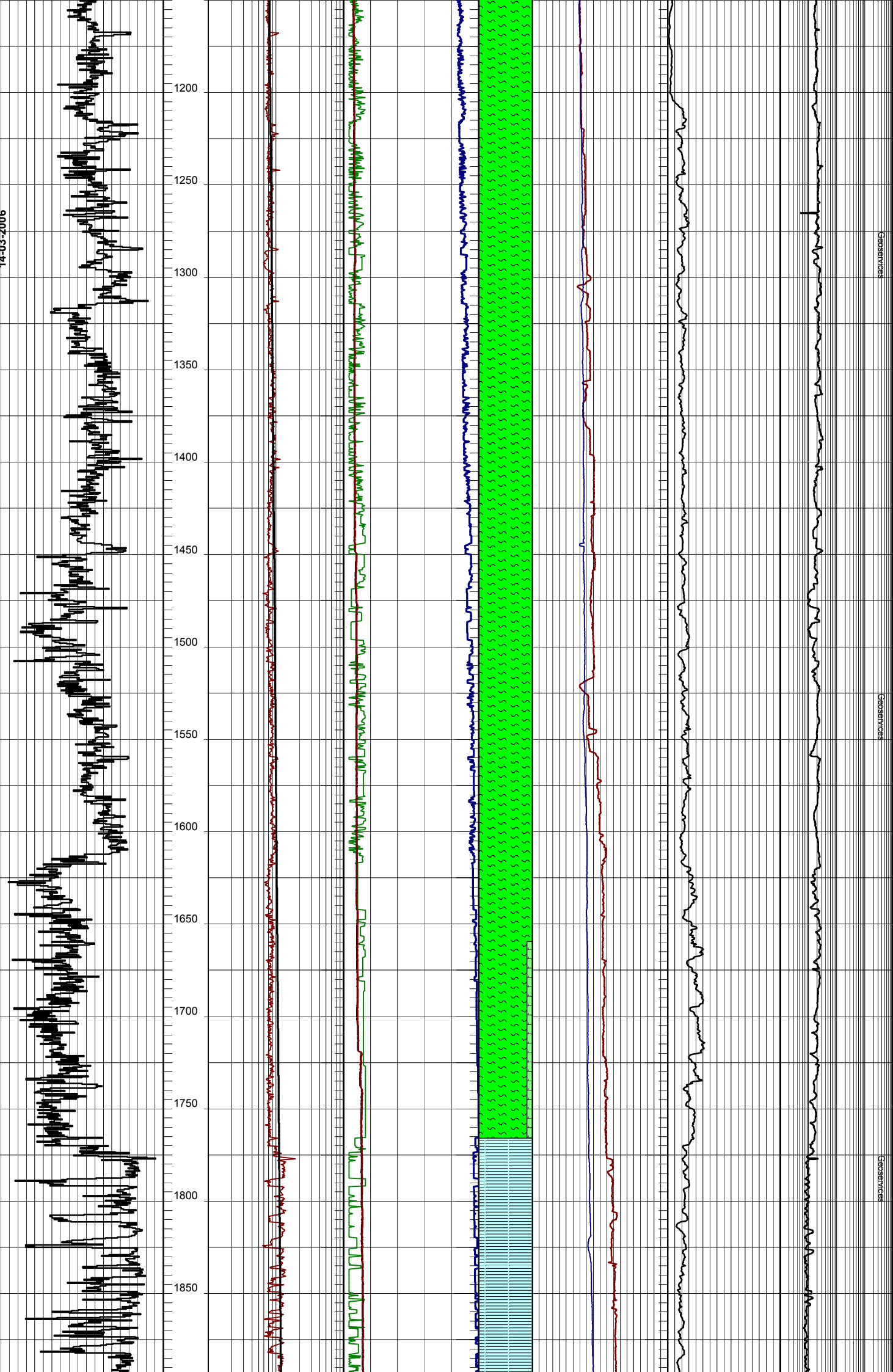
- Claystone
- Fine SST
- Marl
- Coal
- Siltstone
- Medium SST
- Limestone
- Volcanics



13-03-2006

GEOSERVICES

14-03-2006



SOCIALSERVICES

SOCIALSERVICES

SOCIALSERVICES

